

ASIAN LONGHORNED BEETLE LOOK-ALIKES

(all insects shown approximately to scale; sizes given do not include antennae)

Asian longhorned beetle

(*Anoplophora glabripennis*)

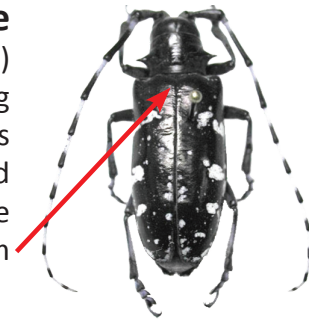
$\frac{3}{4}$ – 1½ inches long

Shiny black, bright white spots

Long antennae, banded

black and white

Black scutellum



Whitespotted sawyer

(*Monochamus scutellatus*)

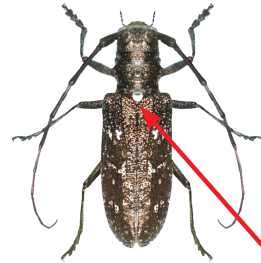
$\frac{3}{4}$ – 1 inch long

Dull or bronzy-black, may be

mottled with whitish patches

Long faintly banded antennae

White scutellum



Northeastern sawyer

(*Monochamus notatus*)

$\frac{3}{4}$ – 1¼ inch long

Mottled light brown/white,

no distinct spots



Eyed click beetle

(*Alaus oculatus*)

1 - 1¾ inch long

Black with white speckles;

Black “eye spots”



Brown prionid

(*Orthosoma brunneus*)

1 – 1½ inches long

Light chestnut brown, no spots



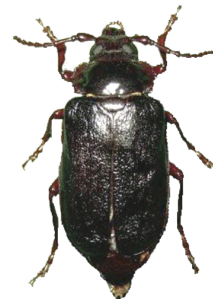
Broadnecked root borer

(*Prionus laticollis*)

1 – 1½ inches long

Black with no white markings

Solid black antennae



Longhorned Beetle

(*Graphisurus fasciatus*)

$\frac{1}{3}$ – $\frac{2}{3}$ inch long

Dark with gray/light brown mottling

Antennae banded white and black



Western conifer seed bug

(*Leptoglossus occidentalis*)

About $\frac{3}{4}$ inch long

Various shades of brown with a distinct geometric pattern on wings

Back legs flared-out at bottom



For more information about the Asian longhorned beetle, or to report a sighting, visit www.aphis.usda.gov or www.BeetleBusters.info



Flyer design and content from a design by the Maine Department of Agriculture

Photos: Asian longhorned beetle: Pennsylvania Dept. of Conservation and Natural Resources - Forestry Archive, Bugwood.org. Whitespotted sawyer, Northeastern sawyer, Broadnecked root borer: Michael Bohne, USDA Forest Service. Eyed click beetle: Tom Murray, bugguide.net. Brown prionid: Kristin Riolo, Priceless Memories, Bugwood.org. Graphisurus fasciatus: Jennifer Forman Orth, Massachusetts Dept. of Agricultural Resources. Western conifer seed bug: Giancarlo Dessi, Wikimedia Commons.

United States Department of Agriculture
Animal and Plant Health Inspection Service

The U.S. Department of Agriculture is an equal opportunity provider and employer.